

NEW, USED, AND REFURBISHED PUMPS AND PARTS

# WHEATLEYGASO.COM

GASO DUPLEX, GASO TRIPLEX AND GASO QUINTUPLEX PLUNGER  
AND PISTON PUMPS BY WHEATLEY AND GASO PUMP

IEQ Industries Ltd

PO Box 230097

Grand Rapids, MI 49523

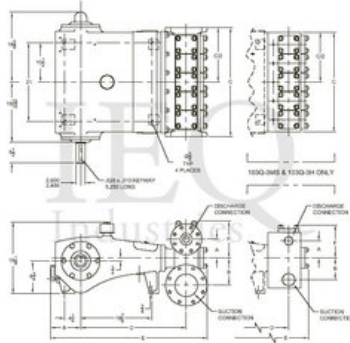
Phone: 800.544.9053 | 616.452.6882

Fax: 888.796.2653

## Wheatley, HP125-M, Quintuplex, Plunger Pump

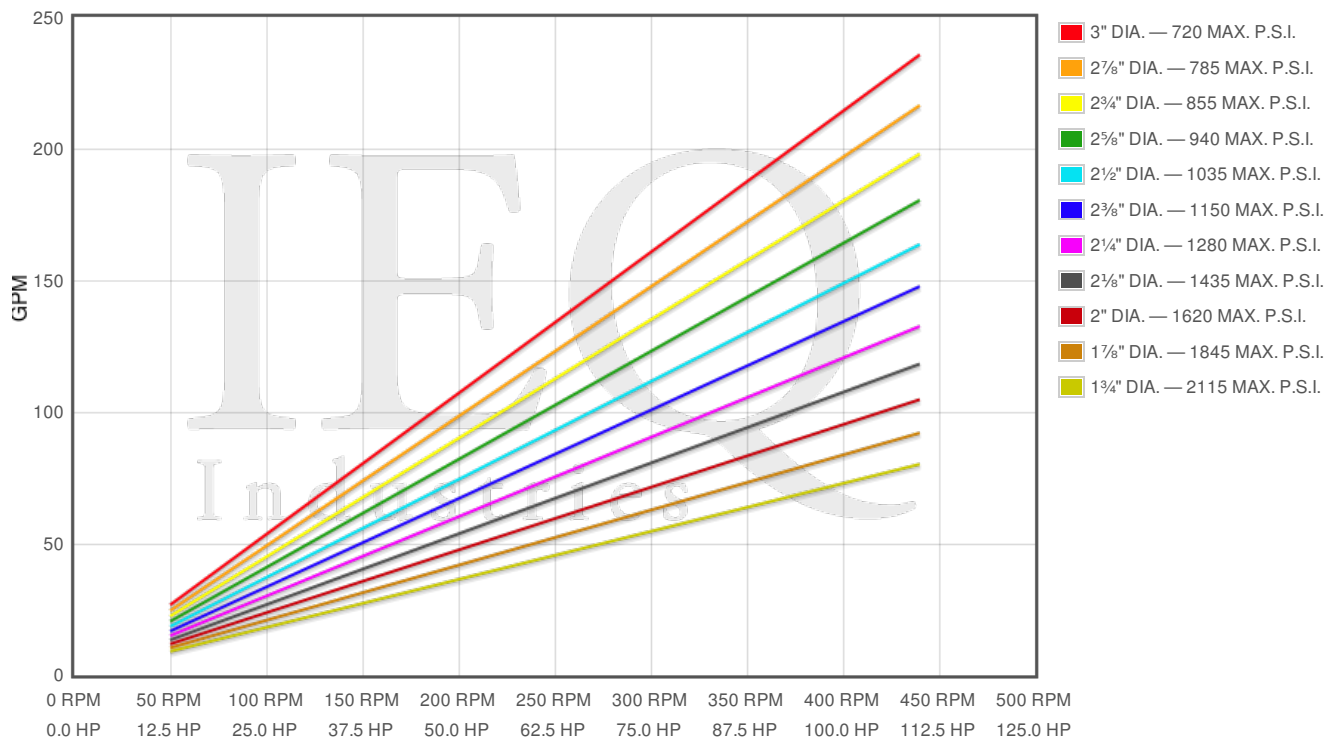
### Specs

Spec	U.S. Standard
Type:	quintuplex
Minimum Plunger Diameter:	1¾"
Maximum Plunger Diameter:	3"
Stroke length:	3½"
Maximum Working Pressure:	2,115 PSI
Rod/Piston Load:	5090lb
Gallons per Minute:	163.7
Barrels per Day:	5613
Brake Horse Power:	110.0



### Features/Benefits

- Cast iron power frame
- Ductile Iron Crankshaft
- Heavy-duty, tapered roller crankshaft bearings
- Precision type, aluminum alloy crankpin bearings
- Cast iron crossheads with upper/lower oil grooves
- Internal pressure lubrication
- Ductile iron connecting rods
- Alloy steel crosshead pins
- Bronze bearing crosshead pin bushings
- Rated rod load is 5090 lbs.
- Plungers - Solid Ceramic, or Tungsten coated



Pump	English Units					50 RPM		150 RPM		250 RPM		350 RPM		440 RPM	
	Plunger Dia. In.	Plunger Area Sq. In.	BPD per RPM	GPM per RPM	Max Press. PSI	BPD	GPM	BPD	GPM	BPD	GPM	BPD	GPM	BPD	GPM
HP125-M	3.000	7.0686	18.360	0.5355	720	918.0	26.77	2754	80.32	4590	133.9	6426	187.4	8078	235.6
	2.875	6.4918	16.862	0.4918	784	843.1	24.59	2529	73.77	4215	123.0	5902	172.1	7419	216.4
	2.750	5.9396	15.427	0.4500	857	771.4	22.5	2314	67.5	3857	112.5	5400	157.5	6788	198.0
	2.625	5.4119	14.057	0.4100	941	702.8	20.5	2109	61.5	3514	102.5	4920	143.5	6185	180.4
	2.500	4.9087	12.750	0.3719	1037	637.5	18.59	1912	55.78	3187	92.97	4462	130.2	5610	163.6
	2.375	4.4301	11.507	0.3356	1149	575.3	16.78	1726	50.34	2877	83.9	4027	117.5	5063	147.7
	2.250	3.9761	10.327	0.3012	1280	516.4	15.06	1549	45.18	2582	75.3	3615	105.4	4544	132.5
	2.125	3.5466	9.212	0.2687	1435	460.6	13.43	1382	40.3	2303	67.17	3224	94.04	4053	118.2
	2.000	3.1416	8.160	0.2380	1620	408.0	11.9	1224	35.7	2040	59.5	2856	83.3	3590	104.7
	1.875	2.7612	7.172	0.2092	1843	358.6	10.46	1076	31.38	1793	52.29	2510	73.21	3156	92.04
1.750	2.4053	6.247	0.1822	2116	312.4	9.111	937.1	27.33	1562	45.55	2187	63.78	2749	80.18	

**Disclaimer I**

This website is intended as a reference tool only. It has been constructed from published data that is based on manufacturer's sales and engineering documents that are either current, historical and obsolete. Much of the machinery data contained herein has been re-rated through the years with different engineering criteria which maybe in conflict with legacy data. Much of the content published here is calculated online with the use of dynamic data using formulas and extrapolations considered to be sound engineering formulas and are correct to the degree that the data used is accurate. We have done our best to be as precise as as possible in this posting but do not represent any of the calculations or performance data to be entirely accurate. The data published here is intended to be general information rather than actual and to serve as a reference rather than a technical absolute. The user of such data should confirm such information independently.

**Copyright and Disclaimers**

WheatleyGas.com is your resource for Gaso pumps, Gaso pump parts and a supplier of ORIGINAL GASO PARTS and equipment, new used and remanufactured Wheatley, GASO and Wheatley/GASO plunger and piston pumps and pump parts and is not affiliated with Wheatley/GASO Inc. or its parent company, National Oilwell Varco, Copyright ©2015, IEQ Industries LTD. All rights reserved, \*Used under license from Intellectual Property Management Services, LLC