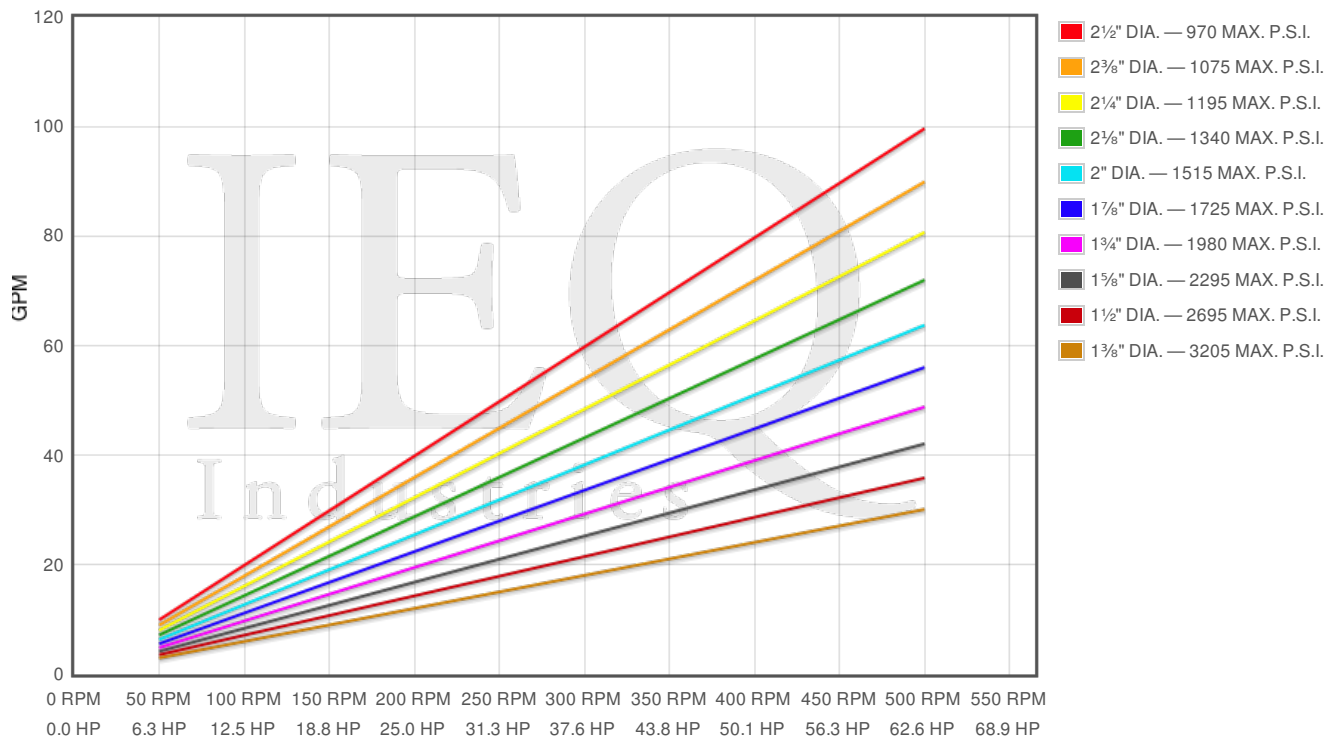
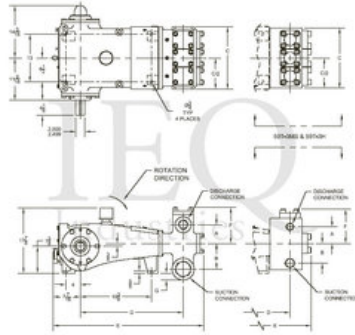


## Wheatley, P323, Triplex, Plunger Pump

### Specs

| Spec                      | U.S. Standard |
|---------------------------|---------------|
| Type:                     | triplex       |
| Minimum Plunger Diameter: | 1 3/8"        |
| Maximum Plunger Diameter: | 2 1/2"        |
| Stroke length:            | 3 1/8"        |
| Maximum Working Pressure: | 3,210 PSI     |
| Rod/Piston Load:          | 4760lb        |
| Gallons per Minute:       | 98.0          |
| Barrels per Day:          | 3360          |
| Brake Horse Power:        | 60.0          |



| Pump | English Units    |                      |             |             |                | 50 RPM |       | 200 RPM |       | 350 RPM |       | 500 RPM |       |
|------|------------------|----------------------|-------------|-------------|----------------|--------|-------|---------|-------|---------|-------|---------|-------|
|      | Plunger Dia. In. | Plunger Area Sq. In. | BPD per RPM | GPM per RPM | Max Press. PSI | BPD    | GPM   | BPD     | GPM   | BPD     | GPM   | BPD     | GPM   |
| P323 | 2.500            | 4.9087               | 6.830       | 0.1992      | 970            | 341.5  | 9.961 | 1366    | 39.84 | 2391    | 69.73 | 3415    | 99.61 |
|      | 2.375            | 4.4301               | 6.164       | 0.1798      | 1074           | 308.2  | 8.99  | 1233    | 35.96 | 2158    | 62.93 | 3082    | 89.9  |
|      | 2.250            | 3.9761               | 5.533       | 0.1614      | 1197           | 276.6  | 8.068 | 1107    | 32.27 | 1936    | 56.48 | 2766    | 80.68 |
|      | 2.125            | 3.5466               | 4.935       | 0.1439      | 1342           | 246.7  | 7.197 | 987.0   | 28.79 | 1727    | 50.38 | 2467    | 71.97 |
|      | 2.000            | 3.1416               | 4.371       | 0.1275      | 1515           | 218.6  | 6.375 | 874.3   | 25.5  | 1530    | 44.62 | 2186    | 63.75 |
|      | 1.875            | 2.7612               | 3.842       | 0.1121      | 1724           | 192.1  | 5.603 | 768.4   | 22.41 | 1345    | 39.22 | 1921    | 56.03 |
|      | 1.750            | 2.4053               | 3.347       | 0.0976      | 1979           | 167.3  | 4.881 | 669.4   | 19.52 | 1171    | 34.17 | 1673    | 48.81 |
|      | 1.625            | 2.0739               | 2.886       | 0.0842      | 2295           | 144.3  | 4.208 | 577.2   | 16.83 | 1010    | 29.46 | 1443    | 42.08 |
|      | 1.500            | 1.7671               | 2.459       | 0.0717      | 2694           | 122.9  | 3.586 | 491.8   | 14.34 | 860.6   | 25.1  | 1229    | 35.86 |
|      | 1.375            | 1.4849               | 2.066       | 0.0603      | 3206           | 103.3  | 3.013 | 413.2   | 12.05 | 723.2   | 21.09 | 1033    | 30.13 |

## Disclaimer I

This website is intended as a reference tool only. It has been constructed from published data that is based on manufacturer's sales and engineering documents that are either current, historical and obsolete. Much of the machinery data contained herein has been re-rated through the years with different engineering criteria which maybe in conflict with legacy data. Much of the content published here is calculated online with the use of dynamic data using formulas and extrapolations considered to be sound engineering formulas and are correct to the degree that the data used is accurate. We have done our best to be as precise as as possible in this posting but do not represent any of the calculations or performance data to be entirely accurate. The data published here is intended to be general information rather than actual and to serve as a reference rather than a technical absolute. The user of such data should confirm such information independently.

### Copyright and Disclaimers

WheatleyGas.com is your resource for Gaso pumps, Gaso pump parts and a supplier of ORIGINAL GASO PARTS and equipment, new used and remanufactured Wheatley, GASO and Wheatley/GASO plunger and piston pumps and pump parts and is not affiliated with Wheatley/GASO Inc. or its parent company, National Oilwell Varco, Copyright ©2015, IEQ Industries LTD. All rights reserved, \*Used under license from Intellectual Property Management Services, LLC