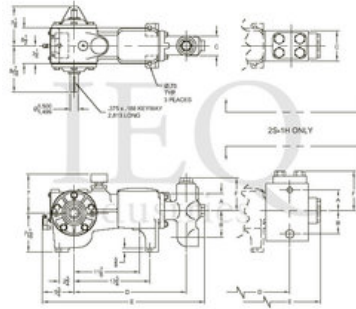


## Wheatley, P50-A (5S-2M), Simplex, Plunger Pump

- 5 horsepower 2.188" stroke horizontal simplex single acting plunger pump
- Available in four different fluid end materials
- Pump speeds up to 350 RPM

### Specs

Spec	U.S. Standard
Type:	simplex
Minimum Plunger Diameter:	1 $\frac{1}{8}$ "
Maximum Plunger Diameter:	1 $\frac{3}{4}$ "
Stroke length:	2 $\frac{3}{16}$ "
Maximum Working Pressure:	2,042 PSI
Rod/Piston Load:	2030lb
Gallons per Minute:	7.97
Barrels per Day:	273
Brake Horse Power:	5.4



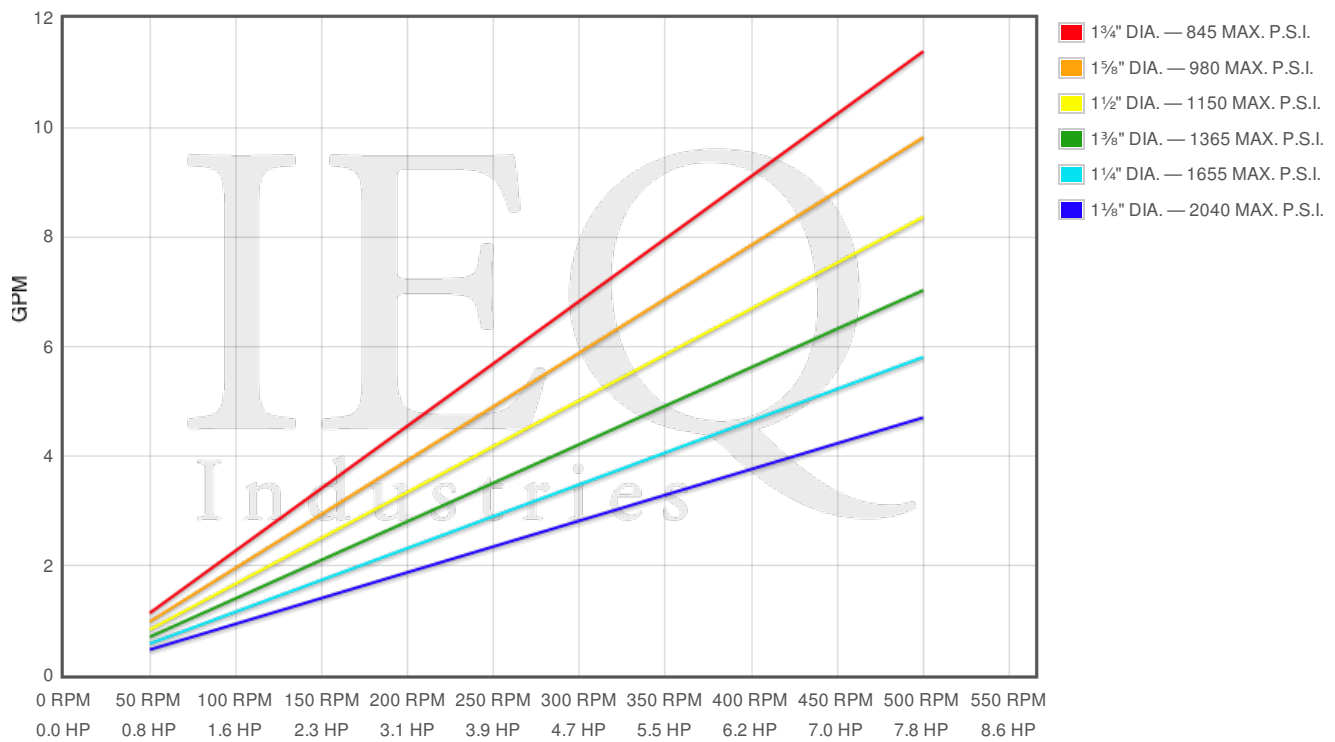
### Features/Benefits

#### Power End Features:

- Cast iron power frame
- Alloy steel crosshead pins
- Heavy-duty roller crankshaft bearings
- Precision type, aluminum alloy crankpin bearings
- Cast iron connecting rods
- Ductile Iron crankshaft with ground journals & polished throws
- Bronze bearing crosshead pin bushings
- Cast iron crossheads with upper/lower oil grooves
- One piece plungers
- Flooded sump, splash distribution lubrication
- Rated rod load is 2030 lbs

#### Fluid End Features:

- Bolted Covers forged Liquid Ends
- Threaded type glands & integral stuffing boxes
- Bronze stuffing box bushings and packing followers
- Optional flanged connections available
- Abrasion Resistant Valves
- Plungers - Solid Ceramic, or Tungsten Coated
- Spring loaded Plunger Packing



Pump	English Units					50 RPM		200 RPM		350 RPM		500 RPM	
	Plunger Dia. In.	Plunger Area Sq. In.	BPD per RPM	GPM per RPM	Max Press. PSI	BPD	GPM	BPD	GPM	BPD	GPM	BPD	GPM
P50-A 5S-2M	1.750	2.4053	0.781	0.0228	844	39.05	1.139	156.2	4.555	273.3	7.972	390.5	11.39
	1.625	2.0739	0.673	0.0196	979	33.67	0.982	134.7	3.928	235.7	6.874	336.7	9.82
	1.500	1.7671	0.574	0.0167	1149	28.69	0.837	114.7	3.347	200.8	5.857	286.9	8.367
	1.375	1.4849	0.482	0.0141	1367	24.11	0.703	96.42	2.812	168.7	4.922	241.1	7.031
	1.250	1.2272	0.398	0.0116	1654	19.92	0.581	79.69	2.324	139.5	4.067	199.2	5.811
	1.125	0.9940	0.323	0.0094	2042	16.14	0.471	64.55	1.883	113.0	3.295	161.4	4.707

### Disclaimer I

This website is intended as a reference tool only. It has been constructed from published data that is based on manufacturer's sales and engineering documents that are either current, historical and obsolete. Much of the machinery data contained herein has been re-rated through the years with different engineering criteria which maybe in conflict with legacy data. Much of the content published here is calculated online with the use of dynamic data using formulas and extrapolations considered to be sound engineering formulas and are correct to the degree that the data used is accurate. We have done our best to be as precise as as possible in this posting but do not represent any of the calculations or performance data to be entirely accurate. The data published here is intended to be general information rather than actual and to serve as a reference rather than a technical absolute. The user of such data should confirm such information independently.

### Copyright and Disclaimers

WheatleyGasos.com is your resource for Gasos pumps, Gasos pump parts and a supplier of ORIGINAL GASO PARTS and equipment, new used and remanufactured Wheatley, GASO and Wheatley/GASO plunger and piston pumps and pump parts and is not affiliated with Wheatley/GASO Inc. or its parent company, National Oilwell Varco, Copyright ©2015, IEQ Industries LTD. All rights reserved, \*Used under license from Intellectual Property Management Services, LLC